

REPAIR GUIDE

FOR REPAIRING THE TORSION BARS OF THE RENAULT KANGOO (KC/FC) AND PSA-TORSION BAR REAR AXLES



NOTE: MAY ONLY BE INSTALLED BY QUALIFIED SPECIALISTS IN COMPLIANCE WITH THE GENERAL REPAIR GUIDELINES OF THE VEHICLE MANUFACTURER

1. PREPARATION

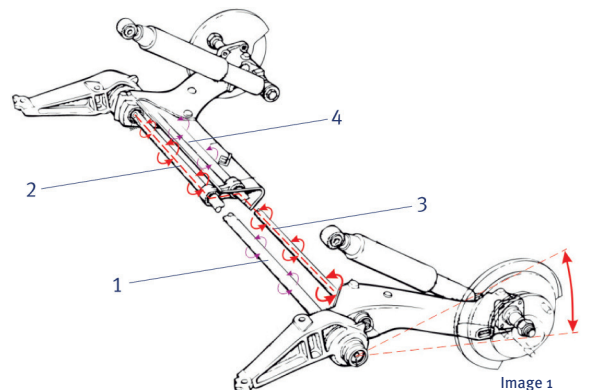
- 1.1. Measure the stand height as the control measurement (from the edge of the mudguard to the middle of the wheel hub).
- 1.2. Jack the vehicle, remove the wheels, remove the protective caps on the torsion bars, clean and treat with rust remover (incl. dual bearings).
- 1.3. Cut the thread to size in the face sides of the torsion bars M10x1.5 (Renault) / M8x1.25 (PSA).
- 1.4. Dismantle the shock absorbers, remove the rubber guides on the stabiliser.
- 1.5. Cut the threaded rods 1002241 (Renault)/ ..42 (Peugeot) to approx. 30-35mm (please check in each case).

2. DISMANTLING THE TORSION BARS/ STABILISERS

- 2.1. Screw the cut threaded bolts tightly into the stabiliser.
- 2.2. Mount the pressure fitting 1002233 (for Renault) or ..34 (for Peugeot) to the threaded bolt. Then push the locking element 1002245 or ..46 over the pressure pin or the guide rod and screw to the wheel mount.
- 2.3. Connect the guide rod 1002244 tightly to the pressure fitting using the tool 1002287. Push the impact weight 1002228 onto the guide rod and secure using the guide washer 1002237 and the screw 41195.

Important: The impact weight must be positioned or dismantled as close as possible to the support during work breaks!

- 2.4. Always ensure that the components are tightly screwed to prevent damage to the thread.
- 2.5. Drive the impact weight forcefully toward the middle of the vehicle against the stopper of the guide rod. Repeat this process as often as necessary until the stabilisers (see picture 1 No.3&4) incl. the dual bearings come loose. If necessary, slightly support the end of the guide rod and keep horizontal. Then release the dual bearings from the stabiliser.
- 2.6. Use the tool as described in 2.1-2.5 to dismantle the torsion bars (see picture 1 no. 1&2).
- 2.7. Clean the cogs in the rocker arms, the axle mounts and the dual bearings and lubricate slightly.

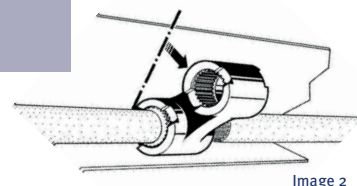


3.3. ASSEMBLY OF THE NEW TORSION BARS

- 3.1. We recommend leaving the mesh packaging on the torsion bars for protection throughout the entire repair work, and only removing it after the part has been mounted.

**Important: Observe the installation position of the torsion bars and stabilisers.
Install the face side with the threaded borehole facing outside.**

- 3.2. Drive the new stabilisers (No.3&4) through gearing from the inside to the outside and connect tightly to the dual bearings. Position the locking wedge 1002239, as shown in picture 2, between the dual bearings and the axle elements.



- 3.3. The face sides of the stabilisers need to sit equally deep in the gearing on the right and the left.

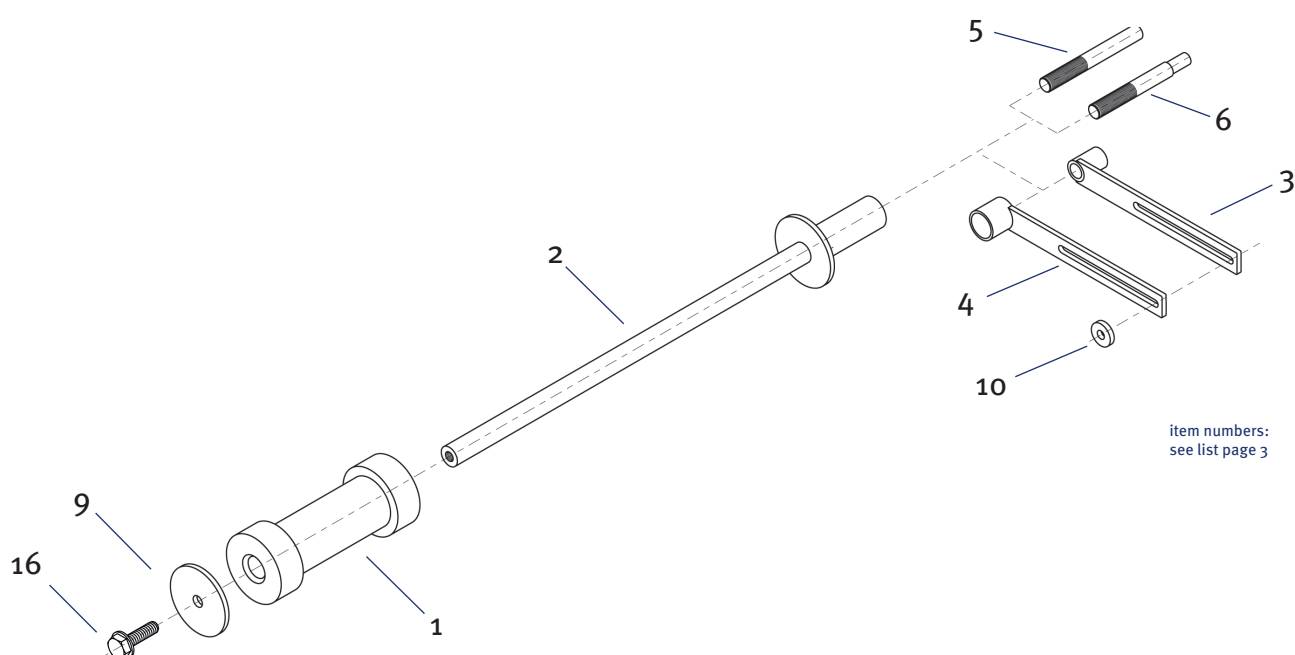
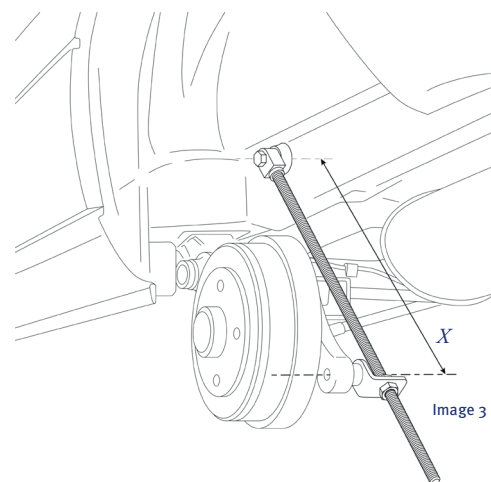
- 3.4. Screw the brace bracket 1002235 to the lower shock absorber mount with 41304. Push the brace 1002236 through the bracket and mount to the upper shock absorber mount using the original attachment screws.

- 3.5. Set the pre-tensioning tool to the dimension $X=430\text{mm}$ (Renault Kangoo) (see picture 3).

- 3.6. Now drive the new torsion bars (1&2) through the gearing from the outside to the inside. Ensure that the dual bearings sit correctly. Likewise, the face sides of the torsion bars need to sit equally deep in the gearing on the right and the left.

- 3.7. Dismantle the tool, remove the setting bracket, remount the rubber guides and attach the caps.

- 3.8. Mount the shock absorbers and the wheels, lower into position. Measure the stand height and compare with original measurements.

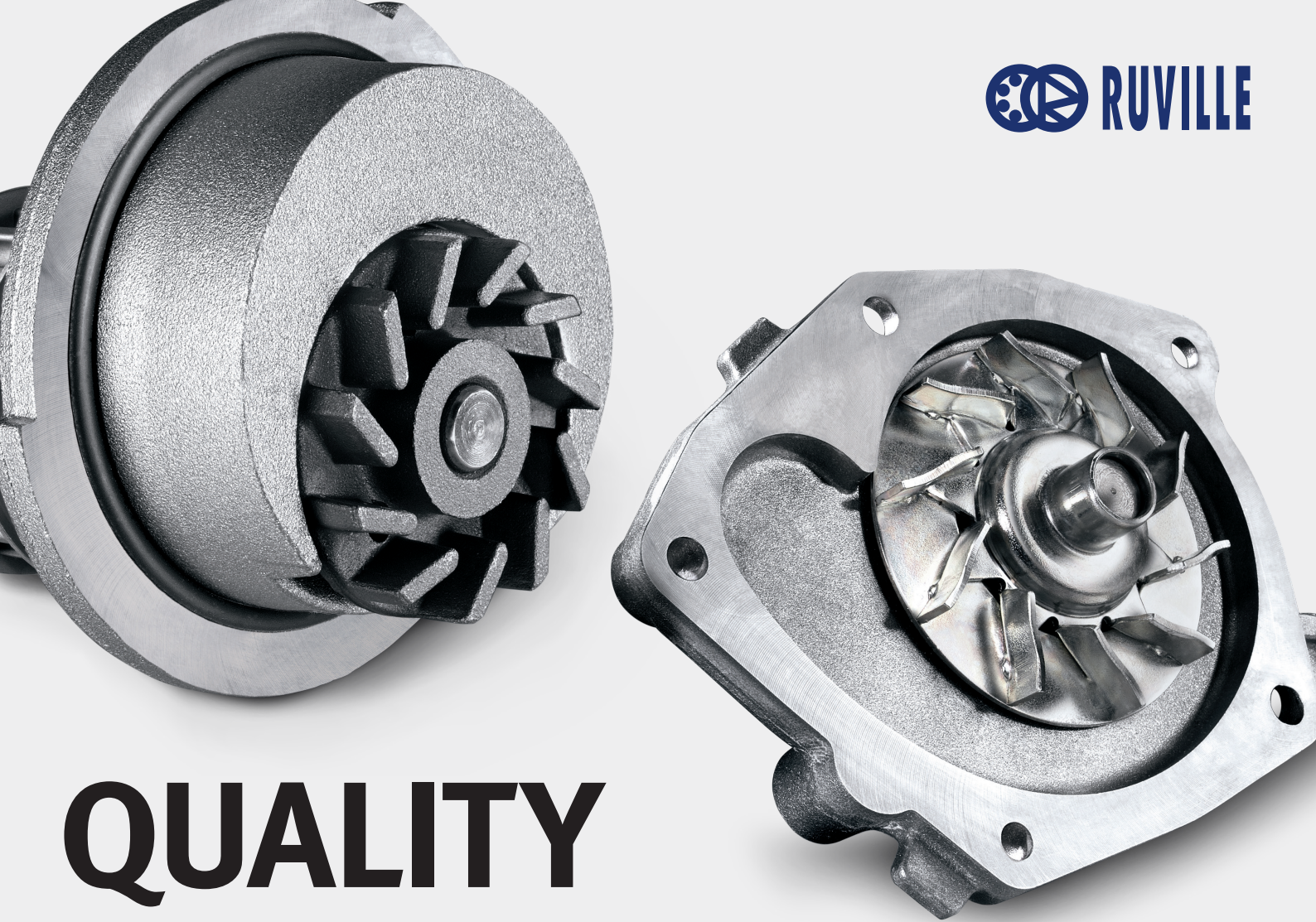


PARTS LIST

	ITEM NUMBER	DESIGNATION
1	1002228	PULL/IMPACT WEIGHT
2	1002244	GUIDE ROD
3	1002245	LOCK GUIDE ROD 1
4	1002246	LOCK GUIDE ROD 2
5	1002233	PRESSURE PIN 1/ RENAULT Ø 23MM
6	1002234	PRESSURE PIN 2/ PEUGEOT Ø 20MM
7	1002235	BRACE BRACKET (2X)
8	1002236	BRACE (2X)
9	1002237	GUIDE WASHER
10	1002238	FLAT WASHER
11	1002241	THREADED ROD M10X1.5X500MM 12.9.
12	1002242	THREADED ROD M8X1.25X1000MM 12.9.
13	1002243	M12X1.75 MUTTER (4X)
14	1002225	CASE
15	1002239	LOCKING WEDGE
16	41195	SCREW M12X1.75 8.8 (2X)
17	41304	SCREW M12X1.25 8.8
18	1002287	OPEN-END WRENCH 70-WIDTH

FOR MORE INFORMATION ABOUT OUR
COMPANY AND PRODUCTS, PLEASE VISIT
WWW.RUVILLE.COM/EN/

distributor stamp



QUALITY REDEFINED.

Perfected, not just optimised: Our new water pumps.

Slide rings made of silicon carbide, counter-rings made of carbon graphite, designed in a flow channel. We have redefined the quality of our water pumps:

For absolute reliability, pumping performance that is precisely tuned to the engine in every driving situation – and a maximum of installation convenience.

Schaeffler quality in perfection. See for yourself.

More information:

www.schaeffler-aftermarket.de