



FAG Service Info



Notes for Installation

Using FAG SmartSet instead of a Grease Cartridge for Wheel Hubs for BPW Axles

Axle manufacturer:	BPW
Part no.:	723 5007 10
	723 5008 10
	723 5009 10
	723 5014 10

See parts catalog for current assignment

Applying enough of the correct type of lubricant is extremely important when it comes to maintaining a good service life for wheel bearings. For this reason, BPW wheel hubs (Figure 1) have grease cartridges preinstalled in the center of the component to supply lubrication. When completing work on these wheel hubs, both the grease cartridge and the wheel bearings must be cleaned and new lubricant added.

Schaeffler Automotive Aftermarket is now offering an alternative repair method for replacing wheel bearings on BPW axles. The solution consists of a wheel hub (Figure 2) and a preassembled FAG SmartSet with lubricant already provided.

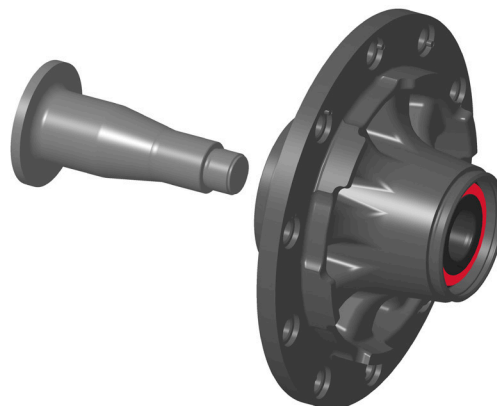


Figure 2: Wheel hub with FAG SmartSet for BPW axles

Note:

As the FAG SmartSet is a sealed unit, **no grease cartridge** is installed in this wheel hub.

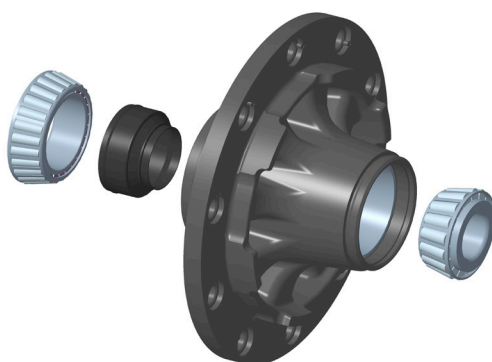


Figure 1: Grease cartridge (black) of a wheel hub for BPW axles

Please observe the vehicle manufacturer specifications!

You want more? We can help!

Phone: +44 (0) 1432 264 264

Fax: +44 (0) 1432 375 760

aftermarket.uk@schaeffler.com

www.repxpert.co.uk