



FAG INFORMACIÓN DE SERVICIO



Notes for Installation

Using FAG SmartSet instead of a Grease Cartridge for Wheel Hubs for BPW Axles

Axle manufacturer: BPW

Part no.: 723 5007 10
723 5008 10
723 5009 10
723 5014 10

See parts catalog for current assignment

Applying enough of the correct type of lubricant is extremely important when it comes to maintaining a good service life for wheel bearings. For this reason, BPW wheel hubs (Figure 1) have grease cartridges preinstalled in the center of the component to supply lubrication. When completing work on these wheel hubs, both the grease cartridge and the wheel bearings must be cleaned and new lubricant added.

Schaeffler Automotive Aftermarket is now offering an alternative repair method for replacing wheel bearings on BPW axles. The solution consists of a wheel hub (Figure 2) and a preassembled FAG SmartSet with lubricant already provided.

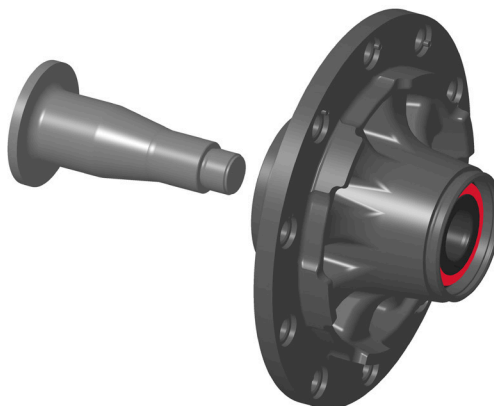


Figure 2: Wheel hub with FAG SmartSet for BPW axles

Note:

As the FAG SmartSet is a sealed unit, **no grease cartridge** is installed in this wheel hub.

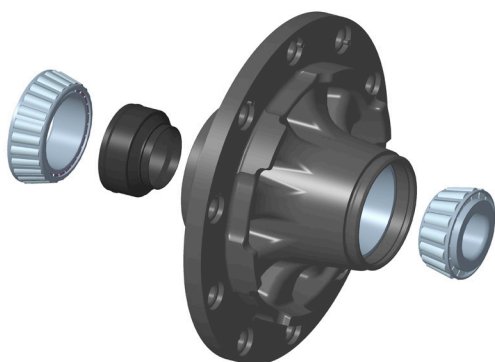


Figure 1: Grease cartridge (black) of a wheel hub for BPW axles

¡Observar las indicaciones del fabricante del vehículo!

Schaeffler Iberia S.L.U.
Ctra. Burgos – NI, Km. 31,100
Polígono Industrial Sur
28750 San Agustín de Guadalix, Madrid, España
Teléfono: +34 91 658 66 86 / Fax: +34 91 658 66 81
www.repxpert.es

SCHAEFFLER
REP>XPERT