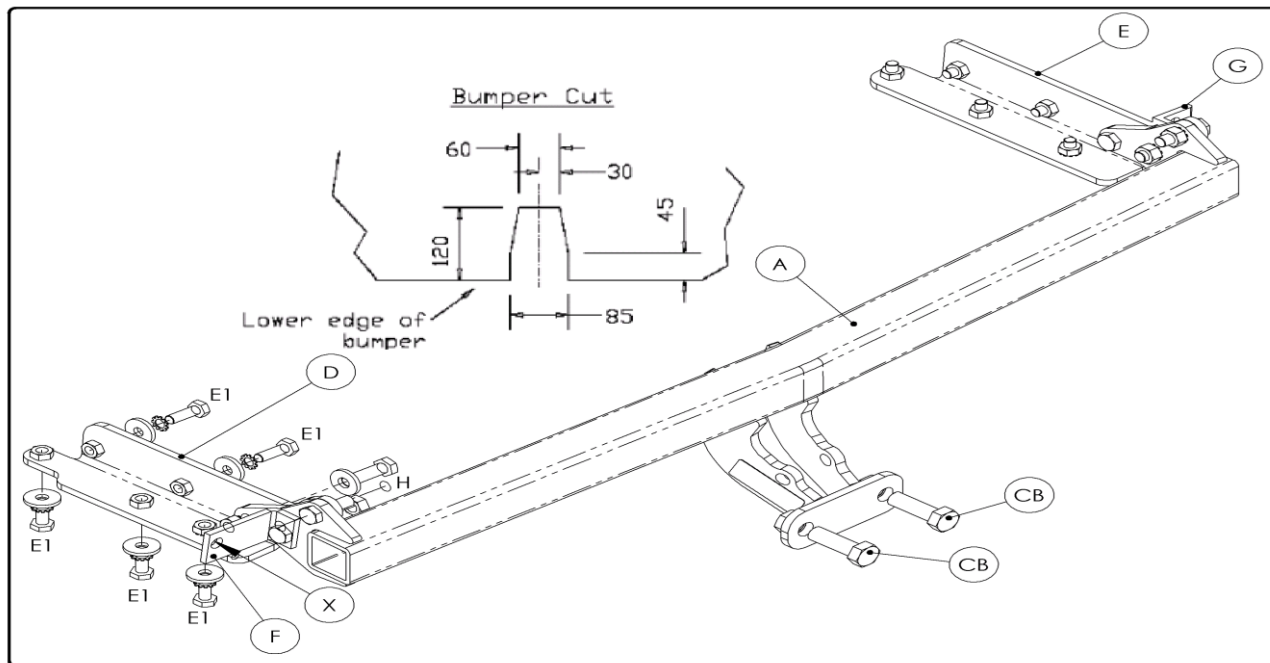


FITTING INSTRUCTIONS

Nissan X-TRAIL

2003-2007

TNI116 101083



MATERIALS

| | | |
|----|----|--|
| A | 1 | Cross Bar with European facing to 94/20/EC A50-1 |
| D | 1 | Left hand sidearm |
| E | 1 | Right hand sidearm |
| E1 | 10 | M10x1.5x30 Bolts, 2 Nuts, Lock Washers and Flat Washers (25mm O.D.) 8 Nut Retainers and M10 x 1.5mm Square Nuts. |
| F | 1 | Left hand cleat |
| G | 1 | Right hand cleat |
| H | 6 | M12x1.75x40 Bolts, Nuts and Lock Washers and 2 Flat Washers (25mm O.D.) |
| Z | 1 | Electrical plate (not shown) |
| CB | 2 | M16 x 50mm Coupling Bolts, Nuts, Lock Washers |

FITTING

1. Remove bumper and plastic spoiler. Remove and discard the 2 chassis end cones (retain 2 of the bolts (X)), release the rearmost exhaust hanger rubber.
2. (see separate fitting instructions for cage nuts).
3. Insert Sidearms (D) and (E) into chassis ends (Note: the sidearms are handed, (D) has a notch cut in its forward end) and loosely secure to captive nuts using Bolts (E1) with Flat Washers, use the 2 Nuts supplied for rearmost holes. Loosely attach Cross Bar (A) to Sidearms using only the forward and rearmost Bolts (H) with the Flat Washers fitted on the outside face of chassis.
4. Fully tighten all bolts. Secure Cleats (F) and (G) to rear panel using original Bolts (X) and to Crossbar (A) using remaining Bolts (H) fully tighten bolts.
5. Cut bumper as shown below. Refit bumper, plastic spoiler and exhaust rubber.

Note: This towbar must be used with a Class A50-1 or A50-X towball, which dimensionally conforms to A50-1 with a 'D' and 'S' value greater than or equal to that of the towbar.

Recommended torque settings: Grade 8.8 bolts: M8 - 24Nm, M10 - 52 Nm, M12 - 80 Nm, M14 - 130 Nm, M16 - 200 Nm Grade 10.9: M12 - 120Nm, M10 - 70Nm M8- 35Nm