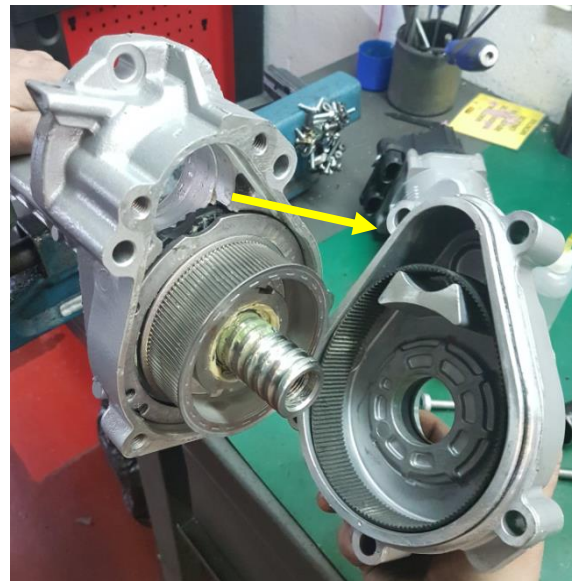


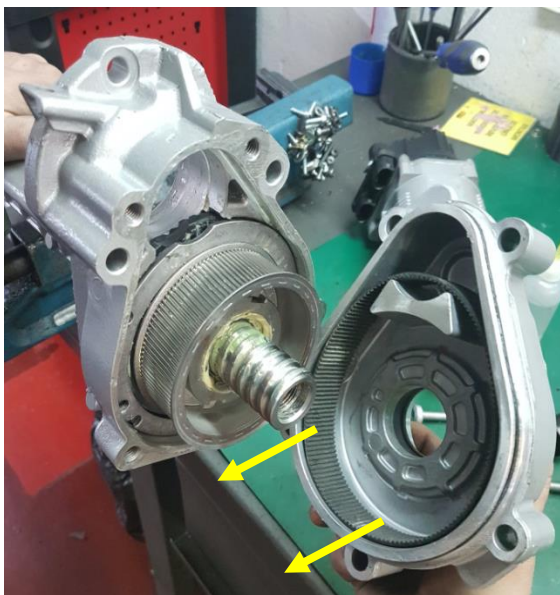
**Transfer of Motor ERR2002 Guideline**

To assemble the electronic steering motor, the following steps must be followed:

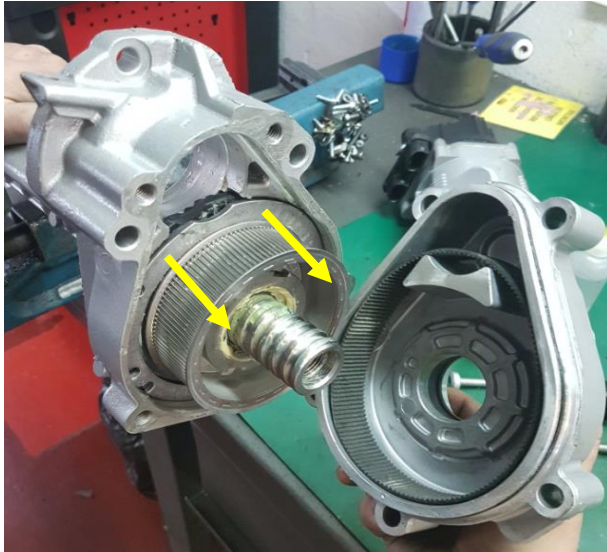
1. Remove part of the housing by removing 5 screws, keep the screws safe for later use.



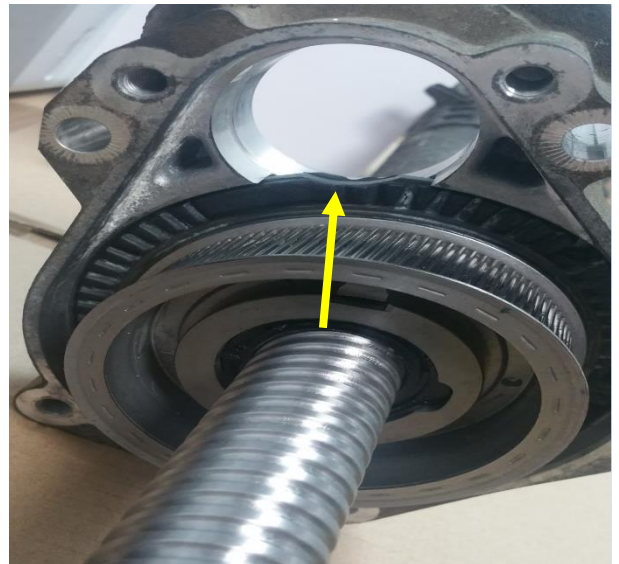
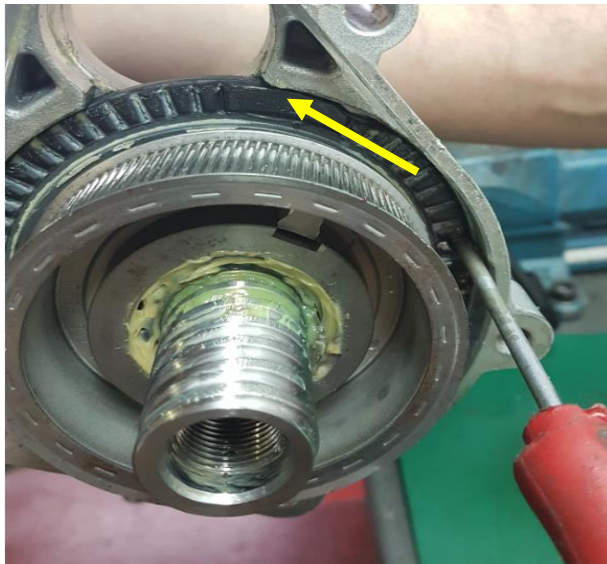
2. Carefully remove the belt from the inside of the housing, and keep safe for later use.



3. Carefully remove the washer, and keep safe for later use.

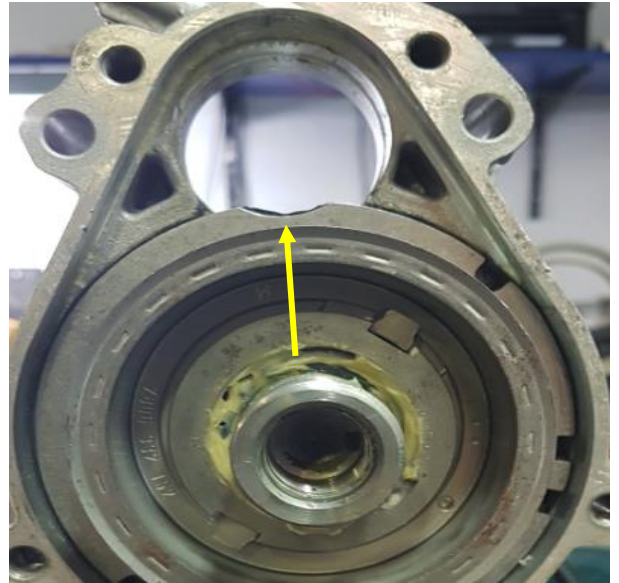


4. To start assembling the motor, carefully position the black plastic bearing. The position of the notch should be parallel with the housing as shown below. Please note this bearing will only move in an anti-clockwise rotation.

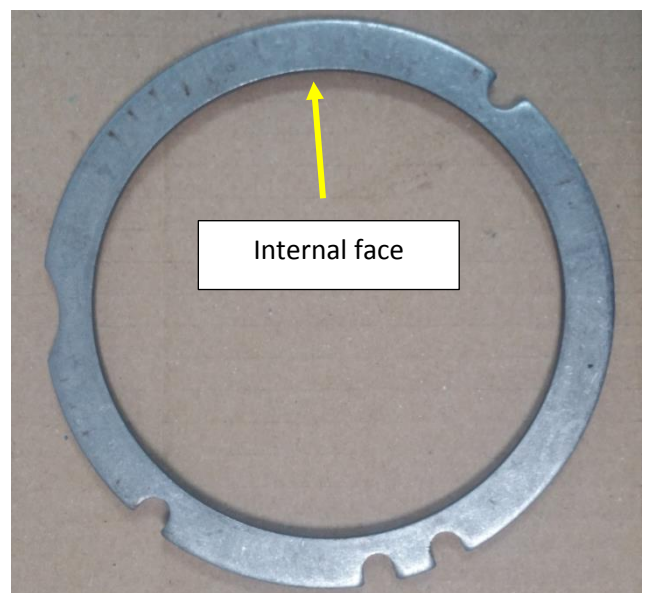
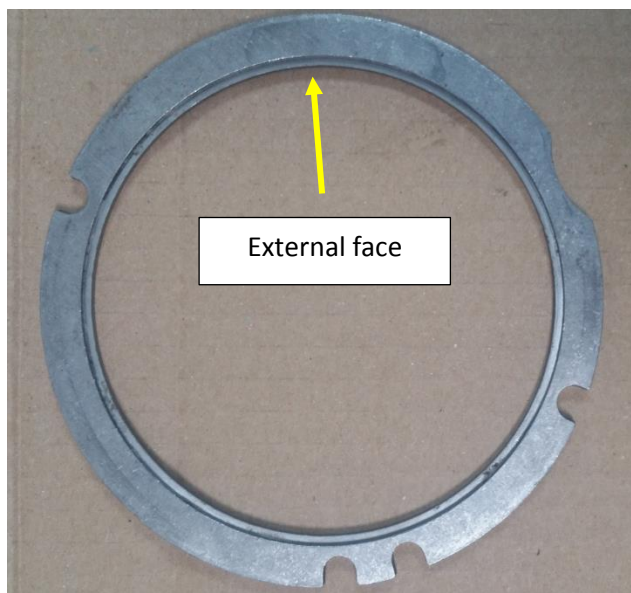




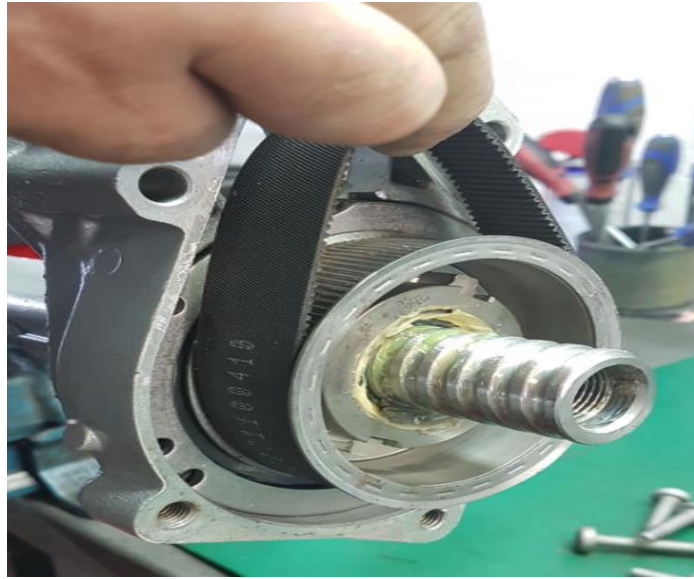
5. Re install the washer. The washer must be positioned to match the same notch as the black plastic bearing.



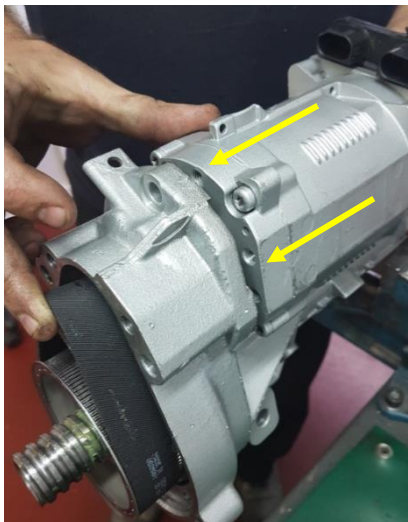
\*\* when re installing the washer, ensure the grooved face is facing outwards. If fitted the wrong way around the cut outs in the washer will not line up with the black plastic bearing\*\*



6. Carefully re install the drive belt, ensure the belt teeth are seated correctly.

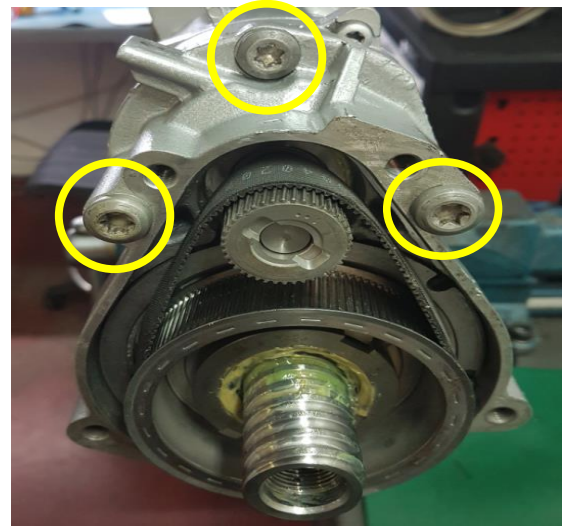


7. Hold the belt and insert the motor through the housing. Slide the belt over the teeth on the motor.





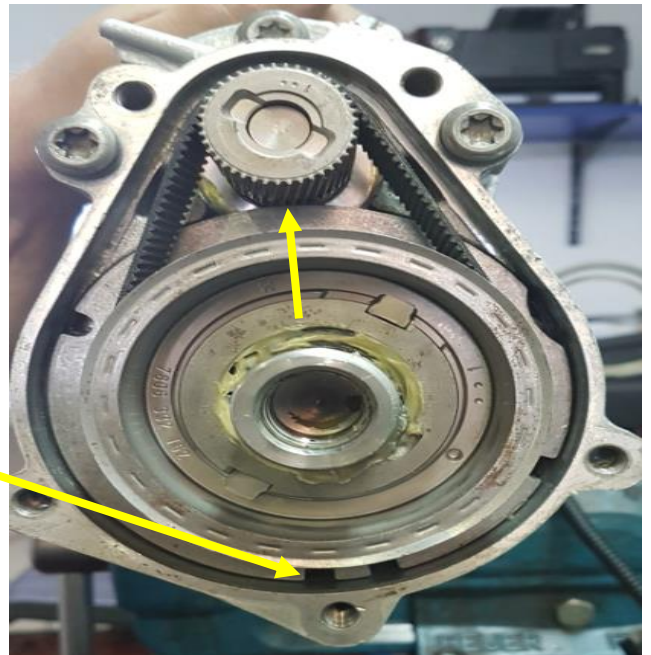
8. Screw the motor in position.



9. Using a screw driver turn the washer and black plastic bearing in a clockwise rotation until the belt is tight.



10. Place the locking pin in position and gently tap to lock the washer and black plastic bearing into position. \*\*check there is sufficient clearance between the teeth of the motor and the washer\*\*



11. Re install the housing, and secure in place with 5 screws

