

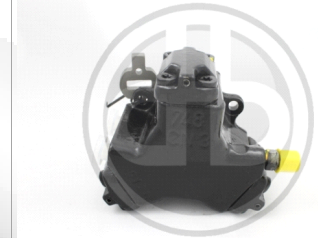
Product info sheet

Robert Bosch

0445010279

Special tools needed?

No



Product specific information

Programming

No

Unlocking

No

Adaption values reset

No

Bleed

Yes

ignition on for 30 seconds

adjustment at mounting_1

No

adjustment at mounting_2

Tightening torques

High Pressure pipe nuts

20 Nm

Mounting fuelpump flange

18 Nm

Assembly instructions

Recommendation: replace fuel filter

Recommendation: replace drive plate

Core charge terms:

- externally intact,
- no mechanical damage,
- not dismantled,
- no heavy corrosion.